



检测报告

编号: SZXML2202822604

日期: 2023年08月29日 第1页,共4页

客户名称: 上海亿思柯电气有限公司

客户地址: 上海浦东新区康桥东路 1159 弄 105 号 N-7

样品名称: 型号: OMEGA; 款号: SPCC冷轧钢

制造商: 亿思柯

以上样品及信息由客户提供。

本报告取代检测报告SZXML2202822602

SGS工作编号: SZIN2208009989PC - SZ

样品接收日期: 2023年08月19日

检测周期: 2023年08月19日 - 2023年08月26日

检测要求: 根据客户要求检测

检测方法: 请参见下一页

检测结果: 请参见下一页

检测结果概要:

检测要求	结论
欧盟RoHS指令2011/65/EU附录II的修正指令(EU) 2015/863- 铅, 汞, 镉和六价铬	符合

通标标准技术服务有限公司深圳分公司
授权签名

范萍

Tina Fan 范萍
批准签署人

扫码查看在线报告



SZXML2202822604



Unless otherwise agreed in writing, this document is issued by the Company subject to its General Conditions of Service printed overleaf, available on request or accessible at <http://www.sgs.com/en/Terms-and-Conditions.aspx> and, for electronic format documents, subject to Terms and Conditions for Electronic Documents at <http://www.sgs.com/en/Terms-and-Conditions/Terms-e-Documents.aspx>. Attention is drawn to the limitation of liability, indemnification and jurisdiction issues defined therein. Any holder of this document is advised that information contained hereon reflects the Company's findings at the time of its intervention only and within the limits of Client's instructions, if any. The Company's sole responsibility is to its Client and this document does not exonerate parties to a transaction from exercising all their rights and obligations under the transaction documents. This document cannot be reproduced except in full, without prior written approval of the Company. Any unauthorized alteration, forgery or falsification of the content or appearance of this document is unlawful and offenders may be prosecuted to the fullest extent of the law. Unless otherwise stated the results shown in this test report refer only to the sample(s) tested.

Attention: To check the authenticity of testing / inspection report & certificate, please contact us at telephone: (86-755) 8307 1443, or email: CN.Doccheck@sgs.com

Room 101-901, Plant 4 & Room 101, Plant 2 & Room 101, Plant 3 & Room 301-501, Plant 3, Jianghao (Bantian) Industrial Plant Area, No. 430, Jihua Road, Bantian Community, Bantian Street, Longgang District, Shenzhen, Guangdong, China 518129 www.sgs.com.cn

中国·广东·深圳市龙岗区坂田街道坂田社区吉华路430号江源(坂田)工业厂区厂房4号101-901、2号101、3号101-501 邮编:518129

t(86-755) 25328888 sgs.china@sgs.com

Member of the SGS Group (SGS SA)

检测报告

编号: SZXML2202822604

日期: 2023年08月29日 第2页,共4页

检测结果:

检测样品描述:

样品编号	SGS样品ID	描述
SN1	SZX22-028226.001	带彩色镀层的金属

备注:

- (1) 1 mg/kg = 0.0001%
- (2) MDL = 方法检测限
- (3) ND = 未检出 (< MDL)
- (4) "-" = 未规定

欧盟RoHS指令2011/65/EU附录II的修正指令(EU) 2015/863-铅, 汞, 镉和六价铬

检测方法: 参考IEC 62321-4:2013+AMD1:2017, IEC 62321-5:2013 和IEC 62321-7-1:2015, 采用ICP-OES和UV-Vis 进行分析.

检测项目	限值	单位	MDL	001
镉 (Cd)	100	mg/kg	2	ND
铅 (Pb)	1000	mg/kg	2	ND
汞 (Hg)	1000	mg/kg	2	ND
六价铬(Cr(VI))▼	-	µg/cm ²	0.10	ND

备注:

- (1) 最大允许极限值引用自RoHS指令(EU) 2015/863。
- (2) IEC 62321 系列等同于 EN 62321 系列。
- (3) ▼= a. 当六价铬的浓度高于0.13 µg/cm²时, 样品为阳性, 即含有六价铬;
b. 当六价铬的浓度为ND(低于0.10 µg/cm²)时, 样品为阴性, 即未检测到六价铬;
c. 当六价铬的浓度介于0.10 µg/cm²与0.13 µg/cm²之间时, 无法直接判定是否检测到六价铬, 因不同个体的样品表面差异可能会影响测定结果;
由于未获知样品的存储条件和生产日期, 样品的六价铬检测结果仅能代表检测时样品含六价铬的状态。

备注: 本报告更新了检测要求。

除非另有说明, 参照ILAC-G8:09/2019, 使用简单接受 ($w=0$) 的二元判定规则进行符合性判定。
除非另有说明, 此报告结果仅对检测的样品负责。本报告未经本公司书面许可, 不可部分复制。
检测报告仅用于客户科研、教学、内部质量控制、产品研发等目的, 仅供内部参考。



Unless otherwise agreed in writing, this document is issued by the Company subject to its General Conditions of Service printed overleaf, available on request or accessible at <http://www.sgs.com/en/Terms-and-Conditions.aspx> and, for electronic format documents, subject to Terms and Conditions for Electronic Documents at <http://www.sgs.com/en/Terms-and-Conditions/Terms-e-Documents.aspx>. Attention is drawn to the limitation of liability, indemnification and jurisdiction issues defined therein. Any holder of this document is advised that information contained hereon reflects the Company's findings at the time of its intervention only and within the limits of Client's instructions, if any. The Company's sole responsibility is to its Client and this document does not exonerate parties to a transaction from exercising all their rights and obligations under the transaction documents. This document cannot be reproduced except in full, without prior written approval of the Company. Any unauthorized alteration, forgery or falsification of the content or appearance of this document is unlawful and offenders may be prosecuted to the fullest extent of the law. Unless otherwise stated the results shown in this test report refer only to the sample(s) tested.

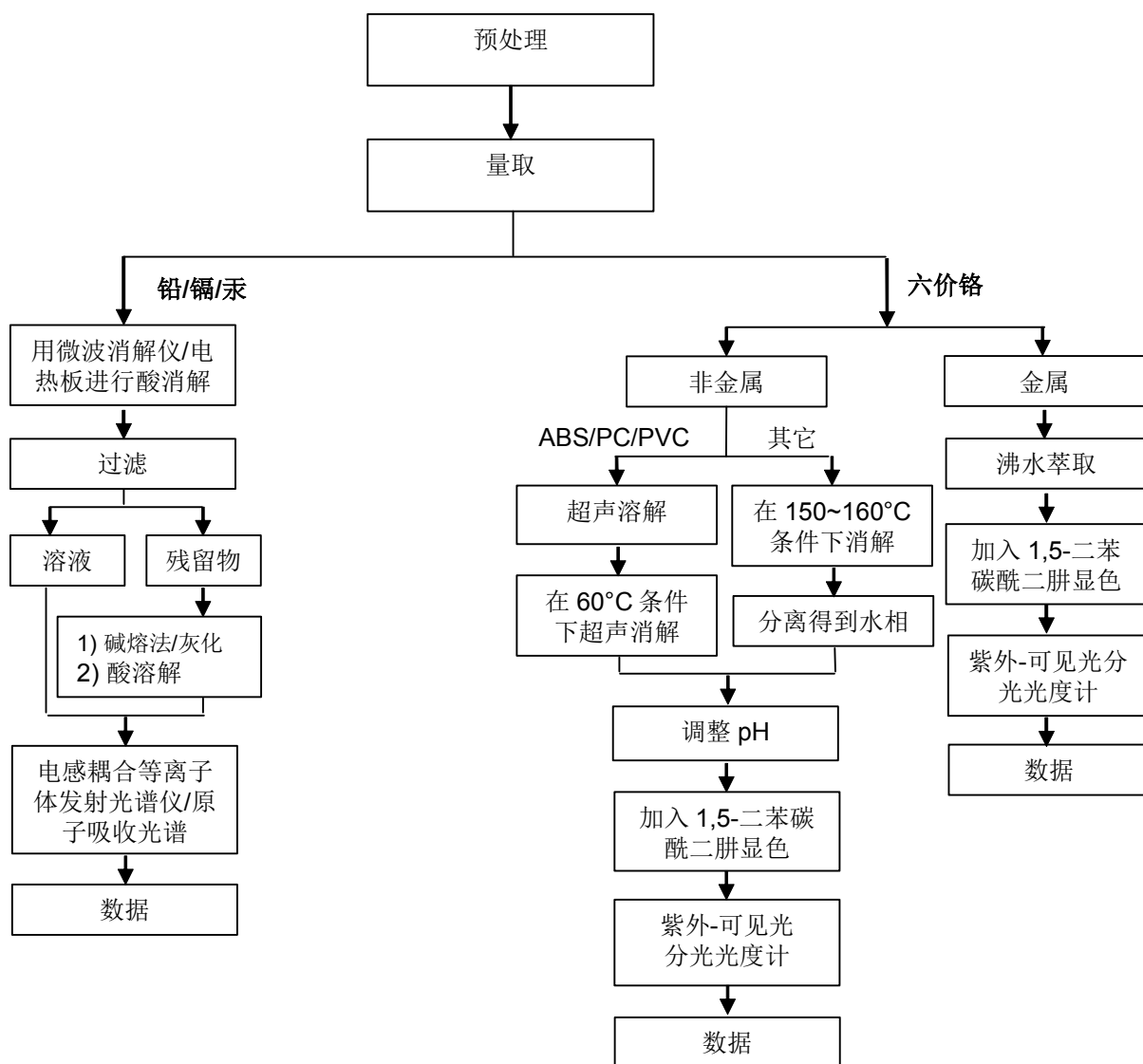
Attention: To check the authenticity of testing / inspection report & certificate, please contact us at telephone: (86-755) 8307 1443, or email: CN.Doccheck@sgs.com

Room 101-901, Plant 4 & Room 101, Plant 2 & Room 101, Plant 3 & Room 301-501, Plant 3, Jianghao (Bantian) Industrial Plant Area, No. 430, Jihua Road, Bantian Community, Bantian Street, Longgang District, Shenzhen, Guangdong, China 518129 www.sgs.com
中国·广东·深圳市龙岗区坂田街道坂田社区吉华路430号江源(坂田)工业厂区厂房4号101-901、2号101、3号101、3号301-501 邮编: 518129 t(86-755) 25328888 sgs.china@sgs.com

附件

Pb/Cd/Hg/Cr⁶⁺ 检测流程图

1) 样品按照下述流程被完全消解（六价铬测试除外）。



检测报告

编号: SZXML2202822604

日期: 2023年08月29日 第4页,共4页

样品照片:



此照片仅限于随SGS正本报告使用

*** 报告完 ***